

TRANSITION ALTITUDE  
6000

AREA MNM ALT (x100)  
24

WAYPOINTS	
LCE01	: 513014.67N 0000529.91E
LCE02	: 513316.42N 0000950.44E
LCE03	: 513346.90N 0001436.66E
LCW01	: 513024.40N 0000020.78E
LCN02	: 513408.09N 0000016.11W
LCN06	: 513608.68N 0001118.82E
SOQQA	: 513623.75N 0002328.43E

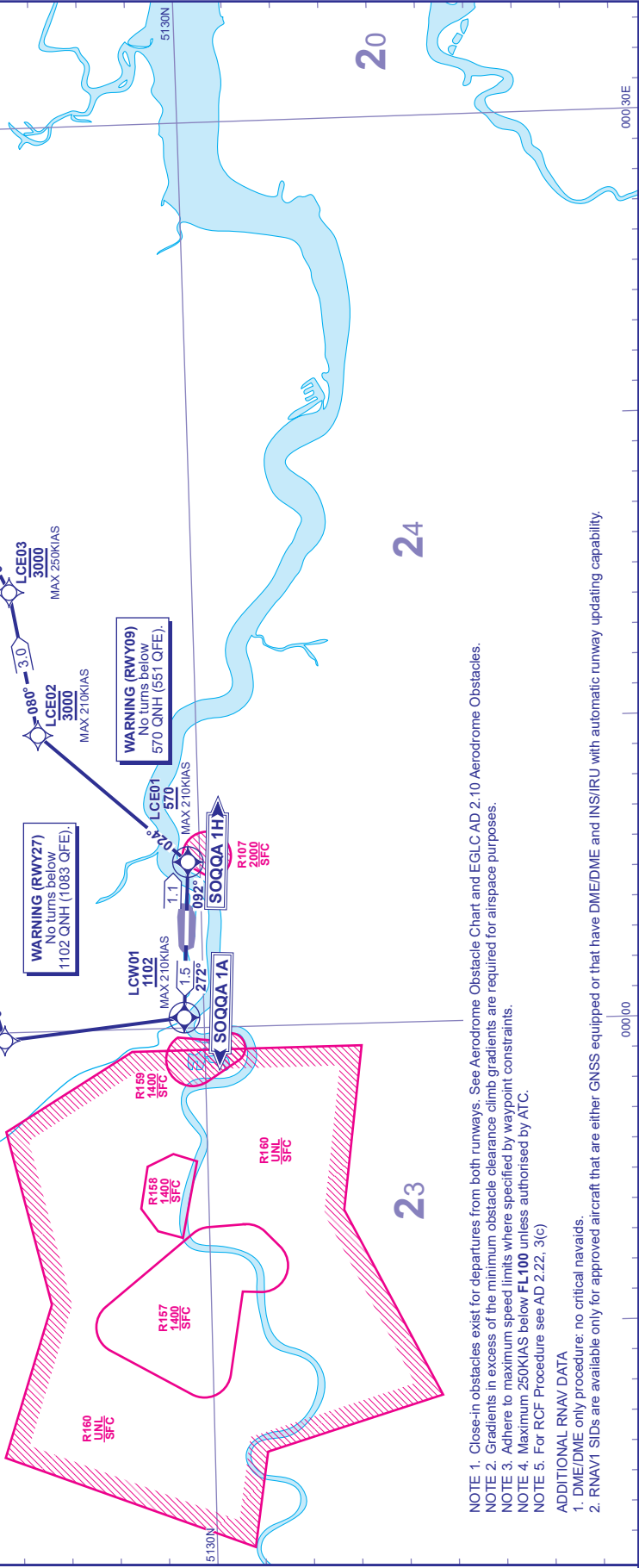
SOQQA 1A RWY 27	Straight ahead to <b>LCW01</b> , direct to <b>LCN02</b> - <b>LCN06</b> , right to <b>SOQQA</b> .	M87.
SOQQA 1H RWY 09	Straight ahead to <b>LCE01</b> , turn left onto track 024° to <b>LCE02</b> , right to <b>LCE03</b> , left to <b>SOQQA</b> .	M87.
<b>OBSTACLE CLEARANCE</b> - RWY 09: Maintain minimum 8.00% climb gradient to <b>275</b> (256). RWY 27: Maintain minimum 7.20% climb gradient to <b>1102</b> (1083).		

ATIS	136.355*	CITY INFORMATION
TWR	118.080, 129.455	CITY TOWER
RAD	128.025, 132.700, 133.455	THAMES DIRECTOR
* See EGLC AD 2.18 for full details.		

VAR 0.6°E - 2022

N

Annual Rate  
of Change 0.19°E



- NOTE 1. Close-in obstacles exist for departures from both runways. See Aerodrome Obstacle Chart and EGLC AD 2.10 Aerodrome Obstacles.
- NOTE 2. Gradients in excess of the minimum obstacle clearance climb gradients are required for airspace purposes.
- NOTE 3. Adhere to maximum speed limits where specified by waypoint constraints.
- NOTE 4. Maximum 250KIAS below **FL100** unless authorised by ATC.
- NOTE 5. For RCF Procedure see AD 2.22. 3(c)
- ADDITIONAL RNAV DATA
1. DME/DME only procedure: no critical nav aids.
2. RNAV1 SIDs are available only for approved aircraft that are either GNSS equipped or that have DME/DME and INS/IRU with automatic runway updating capability.